

## Chest of Drawers

<u>Item</u>	<u>Page #</u>
Base Options .....	2
Handle and Drawer Options .....	3
Item # 725 Seaside Chest of Drawers .....	4
Item # 111 Four Drawer Chest .....	4
Item # 110 Basket Weave Chest .....	4
Item # 435 Sullivan Chest .....	5
Item # 301 French Chest .....	5
Item # 310 Cottage Chest .....	5
Item # 112 Three Drawer Chest .....	6
Item # 23HC Lowcountry Bedside Chest of Drawers .....	6
Item # 27HC Lowcountry Riverside Chest of Drawers .....	6
Item # 578 Classic Seven Drawer Chest .....	7
Item # 577 Plantation Chest of Drawers .....	7
Item # 577 Plantation Chest of Drawers .....	7
Item # 125 Five Drawer Chest .....	8
Item # 735 Cooper River Chest .....	8
Item # 730 Edisto Chest .....	8
Item # 118 Cottage Chiffonier .....	9
Item # 521 Lingerie Chest .....	9
Item # 537 Dockside Blanket Chest .....	10
Item # 119 Dockside Chest .....	10
Item # 714 Oglethorpe Chest .....	10
Item # 591 Leslie's Chest of Drawers .....	11



[www.seabrookclassics.com](http://www.seabrookclassics.com)

[www.coastalwoodcraft.com](http://www.coastalwoodcraft.com)

Phone: 843.466.0241 Fax: 843.466.0288

By **Coastal**  **Woodcraft**

## Base Options

4 Inch Barrel Feet



2 Inch Small Bun Feet



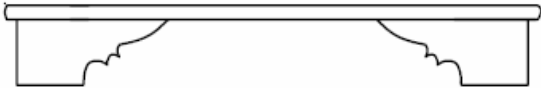
4 Inch Old South Turned Feet



3 inch Large Bun Feet



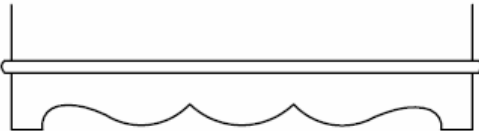
4 Inch High Bracket Feet



7 Inch High Tulip Feet



Seaside Base—*Height can vary*



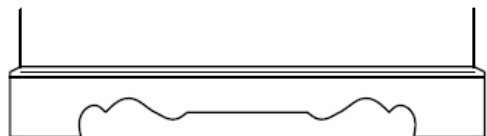
Straight Base—*Height can vary*



Charleston Bracket Feet with Routed Trim  
*Height can vary*



Decorative Cut-out Base  
*Height can vary*



At times, the Seaside base, Bracket Feet, Charleston Bracket feet, and Decorative Cut-out bases may need to be modified slightly to accommodate the dimensions of the chest you desire. Should this substantially change the look of the piece, we will notify you prior to production.



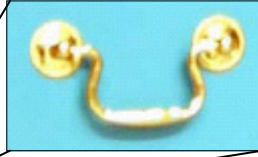
[www.seabrookclassics.com](http://www.seabrookclassics.com)  
[www.coastalwoodcraft.com](http://www.coastalwoodcraft.com)

Phone: 843.466.0241 Fax: 843.466.0288

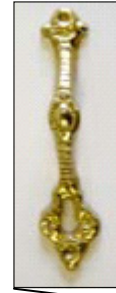
By Coastal Woodcraft

## Handle and Drawer Options

(all items come *standard with Wood knobs*)



Bail Pulls



Brass Handle



**NEW ITEM!**

5 3/8 long stainless steel pulls available. \$8.00 per pull installed

Original  
**FULL LENGTH**  
drawers



**Split**  
Drawer  
option



[www.seabrookclassics.com](http://www.seabrookclassics.com)  
[www.coastalwoodcraft.com](http://www.coastalwoodcraft.com)

Phone: 843.466.0241 Fax: 843.466.0288

By Coastal Woodcraft



Item # 725  
Seaside Chest of Drawers

- Three Drawers
- Wood Knobs
- Seaside Base
- 33H x 36W x 20D @ Top

PHOTO *left*

- Beach

*Refer to Options Page*



Item # 111  
Four Drawer Chest

- Four Drawers
- Wood Knobs
- Bracket Feet
- 35H x 45W x 2D @ Top

PHOTO *left*

- Antique White

*Refer to Options Page*



Item # 110  
Basket Weave Chest

- 11 Drawers
- Tulip Feet
- 45.75H x 65W x 18D @ Top

PHOTO *left*

- Seabrook Black

*Similar items are  
# 122 Basket Weave Nightstand,  
# 670 Basket Weave Bed*

*Refer to Options Page*



[www.seabrookclassics.com](http://www.seabrookclassics.com)

[www.coastalwoodcraft.com](http://www.coastalwoodcraft.com)

Phone: 843.466.0241 Fax: 843.466.0288

By Coastal  Woodcraft

Visit us at [www.seabrookclassics.com](http://www.seabrookclassics.com)



**Item # 435**  
**Sullivan Chest**

- 2 Drawers with French Trim
- Wood Knobs
- French Legs
- 36.5H x 48W x 20.5D @ Top

**PHOTO left**

- Oyster

*Refer to Options Page*



**Item # 301**  
**French Chest**

- Three Drawers with Quarter Round Bead Trim
- Wood Knobs
- French Legs
- 36.5H x 48W x 16D @ Top

**PHOTO left**

- Seabrook Yellow

*Refer to Options Page*



**Item # 310**  
**Cottage Chest**

- Four Drawers with Quarter Round Bead Trim
- Wood Knobs
- French Legs
- Curved Skirt
- 40H x 52W x 20.5D @ Top

**PHOTO left**

- St. Croix

*Refer to Options Page*



[www.seabrookclassics.com](http://www.seabrookclassics.com)

[www.coastalwoodcraft.com](http://www.coastalwoodcraft.com)

Phone: 843.466.0241 Fax: 843.466.0288

By **Coastal**  **Woodcraft**

Chest of Drawers ... Page — 5





**Item # 112**  
**Three Drawer Chest**

- Quarter Round Bead Trim on Three Drawers
- Wood Knobs
- Bracket Feet
- 33H x 36W x 20D @ Top

**PHOTO left**

- Antique White over Seabrook Blue

*Refer to Options Page*



**Item # 23HC**  
**Lowcountry Bedside Chest of Drawers**

- French Trim on Four Drawers
- Wood knobs
- Charleston Bracket Feet
- Recessed Side Panels
- 30.5H x 26W x 19D @ Top

**PHOTO left**

- Ricefield over Sunset

*Refer to Options Page*



**Item # 27HC**  
**Lowcountry Riverside Chest of Drawers**

- French Trim on Four Drawers
- Wood Knobs
- Charleston Bracket Feet
- Recessed Side panels
- 40H x 36W x 21D @ Top

**PHOTO left**

- Camellia over Oyster
- OPTIONAL Monogram (priced separately)

**Monogram**

*(See Monogram Options)*

- Style: Vine
- Oyster

*Refer to Options and Monograms Page*



[www.seabrookclassics.com](http://www.seabrookclassics.com)

[www.coastalwoodcraft.com](http://www.coastalwoodcraft.com)

Phone: 843.466.0241 Fax: 843.466.0288

By **Coastal**  **Woodcraft**



Item # 578  
Classic Seven Drawer Chest

- Seven Drawers
- French Trim
- Appliqué
- Wood Knobs
- 36H x 62.5W x 21D @ Top

**PHOTO left**

- Beach

*Refer to Options Page*



Item # 577  
Plantation Chest of Drawers

- Five Drawers
- Two Doors
- Wood Knobs
- One adjustable shelf each in side compartment
- 36H x 56W x 22D @ Top

**PHOTO left**

- Victorian White
- Plantation Shutter Doors

*All Door Styles available, see Options*



Item # 577  
Plantation Chest of Drawers  
(Same item as above)

**PHOTO left**

- Bayside
- Boat Cut-Out Door

*All Door Styles available, see Options*



[www.seabrookclassics.com](http://www.seabrookclassics.com)

[www.coastalwoodcraft.com](http://www.coastalwoodcraft.com)

Phone: 843.466.0241 Fax: 843.466.0288

By Coastal Woodcraft



Item # 125  
Five Drawer Chest

- Five Drawers
- Wood Knobs
- Bracket Feet
- 41.5H x 36W x 18D @ Top

**PHOTO left**

- Victorian White

*Refer to Options Page*



Item # 735  
Cooper River Chest

- Two Piece Chest
- Six Drawers
- 48H overall @ Top
- Top is 15H x 32.5W x 19D
- Base is 33H x 34W x 19.75D
- Ogee Style Feet

**PHOTO left**

- Antique White



Item # 730  
Edisto Chest

- Two Pieces
- Eight Drawers
- Wood Knobs
- Arched Base
- 53H x 39W x 22D @ Top

**PHOTO left**

Regatta over Victorian White

**SMALL PHOTO left**

- OPTIONAL Bail Handles
- Gullah Blue

*Refer to Options Page*



[www.seabrookclassics.com](http://www.seabrookclassics.com)

[www.coastalwoodcraft.com](http://www.coastalwoodcraft.com)

Phone: 843.466.0241 Fax: 843.466.0288

By **Coastal Woodcraft**





**Item # 118**  
**Cottage Chiffonier**

- Quarter Round Bead Trim on 5 Drawers
- French Curved Legs
- 60H x 30.5W x 16D @ Top

**PHOTO *left***

- Oyster over Wisteria

*Similar items are:*

*# 135 Cottage Nightstand,*

*# 301 French Chest*

*# 310 Cottage Chest*



**Item # 521**  
**Lingerie Chest**

- Two Doors
- Six Drawers
- One Adjustable Shelf
- Small Bun Feet
- 80H x 28.5W x 18D @ Crown

**PHOTO *left closed, right open.***

- Plantation Shutter Doors
- Bermuda over St. Croix

***All Door Styles available,***  
***see Options***



[www.seabrookclassics.com](http://www.seabrookclassics.com)

[www.coastalwoodcraft.com](http://www.coastalwoodcraft.com)

Phone: 843.466.0241 Fax: 843.466.0288

By **Coastal**  **Woodcraft**



**Item # 537  
Docksider Blanket Chest**

- Hinged Top lifts to provide wide storage
- Rope Trim and Flat Panels at front and sides.
- Old South Turned Feet
- 19H x 40W x 18D @ Top

**PHOTO left**

- Victorian White
- OPTIONAL Monogram (priced separately)

**Monogram**

*(See Monogram Options)*

- Style: Vine
- Island Blue



**Item # 119  
Docksider Chest**

- Rope Trim
- Framed Flat Panel on Sides
- Five Drawers with English Bead Trim
- Old South Turned Feet
- 40.5H x 40.5W x 21.25D @ Top

**PHOTO left**

- Seabrook Black over Brown

*Refer to Options Page*



**Item # 714  
Oglethorpe Chest**

- Double Crown Top
- 5 Drawers (Top drawers are split)
- Step out Stiles
- Oglethorpe Feet
- 42H x 54W x 19.5D @ Top

**PHOTO left**

- Regatta

*Refer to Options Page*



[www.seabrookclassics.com](http://www.seabrookclassics.com)

[www.coastalwoodcraft.com](http://www.coastalwoodcraft.com)

Phone: 843.466.0241 Fax: 843.466.0288

By **Coastal**  **Woodcraft**

Visit us at [www.seabrookclassics.com](http://www.seabrookclassics.com)



Item # 591  
Leslie's Chest of Drawers

- 8 drawers, bead board bottoms
- Large bun feet
- Beadboard panel sides
- Beadboard squared panel doors
- Standard wood knobs
- 61.5W x 21D x 36.5H

Photo *left shown open, below with doors closed.*

- Shown in Victorian white over Camellia, in medium rub

*All Door Options Available*



[www.seabrookclassics.com](http://www.seabrookclassics.com)  
[www.coastalwoodcraft.com](http://www.coastalwoodcraft.com)

Phone: 843.466.0241 Fax: 843.466.0288

By Coastal  Woodcraft

Visit us at [www.seabrookclassics.com](http://www.seabrookclassics.com)



by Coastal  Woodcraft

Orders or Inquiries  
843.466.0241

Fax  
843.466.0288

Email  
[Info@seabrookclassics.com](mailto:Info@seabrookclassics.com)



[www.seabrookclassics.com](http://www.seabrookclassics.com)  
[www.coastalwoodcraft.com](http://www.coastalwoodcraft.com)

Phone: 843.466.0241 Fax: 843.466.0288

By Coastal  Woodcraft

Chest of Drawers ... Page — 12